



mediven<sup>®</sup> cotton  
– naturally well cared for

*Feel the difference.  
Make a difference.*

medi. I feel better.









*Feel the difference.*

## mediven® cotton – Optimal combination of fibres

**A natural and pleasant feeling  
on the skin at all times.**

---

mediven cotton is the first medical compression stocking with organic cotton from medi – and thus a cotton compression stocking with additional benefits. Well-being with a cotton content of 27 percent: the organic fibre is soft to the touch and in direct contact with the skin for a high level of wearing comfort. The combination with functional fibres provides a thermoregulating effect – cooling in warm temperatures and warming in cold weather.

The natural fibre cotton is considered particularly soft – and therefore suitable for sensitive and allergic skin. This has been dermatologically tested for mediven cotton and given top marks.





## Feel the difference.

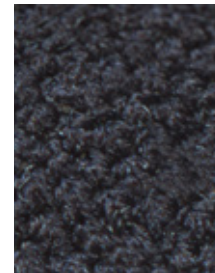
Soft organic cotton with thermoregulation effect – also suitable for sensitive and atopic skin



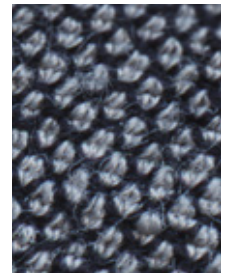
### More cotton

**Double woven.** mediven cotton has an organic cotton content of approximately 27 percent. The compression-giving elastane thread is double-woven with the soft organic cotton yarn. The organic cotton thread thus almost completely covers the elastane thread.

**Directly on the skin.** Thanks to the double winding with organic cotton and the special knitting technology, the soft organic cotton lines the inside of the stocking – directly on the skin.



Outside



Inside – white:  
undyed cotton yarn



## Cooling and warming effect

### Perfect for warm temperatures.

Directly on the skin, cotton has an absorbing function: it takes away excess moisture and sweat from the skin and stores it in the inside of the fibre. At higher temperatures moisture evaporates.

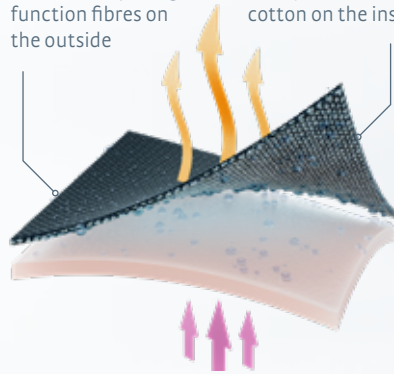
The polyamide and elastane on the outside of the stocking is moisture repellent and wicks it away together with the water vapor to the outside. The result: a faster evaporation effect and a fresh feeling – pleasantly cool on the leg.

### Perfect for cold temperatures.

Between the knitted fabric and the individual fibres are air chambers. In cold temperatures, they form an isolating layer – the leg remains pleasantly warm.

Moisture-repelling function fibres on the outside

Liquid-absorbing cotton on the inside



Isolating air chambers between knitted fabric and fibres



## Proven difference – independently tested for sensitive and allergic skin

Two dermatological, medical expert evaluations confirm the properties of mediven cotton: In the independent tests, no reactions occurred in people with sensitive or allergic skin. mediven cotton performed convincingly in both tests: top rating "excellent".



*Feel the difference.*







*Make a difference.*

## mediven<sup>®</sup> cotton – Organic cotton and recycled materials

**With responsibility for people  
and the environment.**

---

The cultivation and processing of traditional cotton usually involves the use of genetically modified seeds, harmful pesticides and hazardous chemicals – and water consumption is often enormous. With consequences for people and the environment.

We took this into account when developing mediven cotton: Through intensive collaboration with our suppliers, we rely on organic cotton and recycled polyamide yarn. Both are certified by the leading international standards, which have high ecological and social requirements: For transparency and trust as well as a step towards more sustainability.





# Make a difference.

GOTS-certified organic cotton\* and GRS-certified recycled polyamide\*\* – caring for resources and the environment

## Benefits of GOTS-certified organic cotton\*:

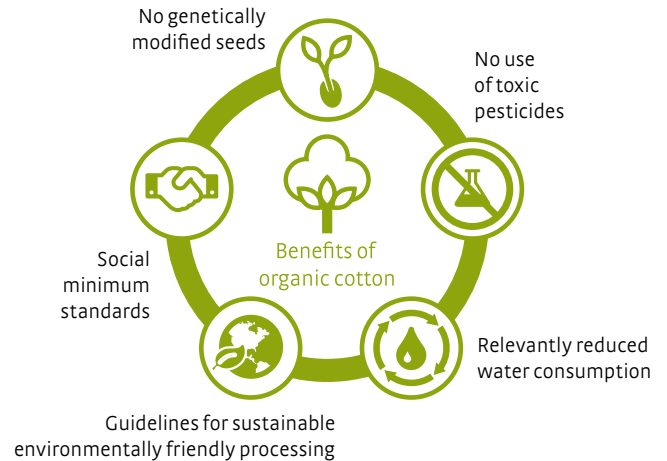
Compared to conventional cotton, organic cotton offers important advantages for the environment – and for the people involved in its cultivation through to further processing. That is why 100 percent genuine organic cotton is used for mediven cotton.

\*Yarn used in mediven cotton is GOTS-certified by the yarn supplier.  
GOTS = Global Organic Textile Standard  
([www.global-standard.org](http://www.global-standard.org))

## Benefits of GRS-certified polyamide yarn\*\*:

The polyamide yarn used consists of 60 percent recycled raw material from polyamide production and meets the specified traceability requirements – the result: a positive impact for the environment and saved resources.

\*\*Yarn used in mediven cotton is GRS-certified by the yarn supplier.  
GRS = Global Recycle Standard  
([www.textileexchange.org](http://www.textileexchange.org))





## Certified difference

In order to maintain quality and materials at a high level and to meet the required transparency of our customers, we use independently certified materials for mediven cotton. Our suppliers are re-certified annually through audits in order to comply with the required standards. In addition to the GOTS or GRS certifications of our suppliers, medi performs additional audits that also have to be renewed annually:



100 percent genuine organic cotton.

With the Standard 100 GMO by OEKO-TEX, organic cotton is tested for genetically modified organisms (GMO) through laboratory testing. This confirms that our organic cotton is indeed what it promises – genuine organic quality.

60 percent recycled share of the polyamide yarn.

Within the Standard 100 certification of recycled materials by OEKO-TEX, it is checked whether any harmful substances are contained. In addition: The origin of the recycled material must be indicated – for more sustainability.



*Make a difference.*





## mediven<sup>®</sup> cotton

### medi tip<sup>1</sup>

Due to the material, the fit and product characteristics we recommend mediven cotton for:

- Women / men
- Normal weight / overweight
- Light to heavy tendency to venous oedema
- Also for soft connective tissue

### Indications<sup>2</sup>

- Chronic venous disease: C0s – C4 according to CEAP
- Initial phase following varicose therapy
- Congestion problems and oedema during pregnancy
- Postoperative reperfusion oedema, post-traumatic, postoperative, occupational, medicinally induced oedema
- Oedema due immobility
- Superficial venous thrombosis
- Condition after thrombosis, postthrombotic syndrome
- Thrombosis prophylaxis in mobile patients
- Inflammatory dermatoses of the legs
- Nausea and dizziness in pregnancy

### Product features

- First medical compression stocking with organic cotton – lined on the inside of the stocking for direct skin contact
- Polyamide yarn with recycled content for effective and resource-saving compression
- Thermoregulating effect – cooling in hot temperatures and warming in cold weather
- Ideal compression solution for patients with atopic and sensitive skin – dermatologically proven via dermatest
- Opaque look

<sup>1</sup> Please note that this recommendation does not replace a doctor's diagnosis or professional advice from a specialist medical retailer.

<sup>2</sup> Selecting the ideal compression stockings depends on the indication and the individual needs of the patients.





**Proven to be free of harmful substances**

All medi products are regularly tested for harmful substances: Annual tests ensure that the requirements of Standard 100 by OEKO-TEX are met.



Panty



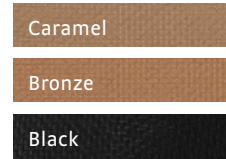
Thigh



**Special open toe solution**  
Very narrow border on the toes. Perfect combination if wearing open shoes.



Below-knee



**Environmentally friendly dyeing process**

In the dyeing process, medi uses dyes that allow the wastewater to be discharged into the sewage system without further treatment. Twice a year the wastewater is checked by the appropriate water authorities to exclude any residual harmful substances. In addition, our dye-works uses a system for heat recovery from the dyeing water: the heat is used to heat fresh water for the dyeing process as well as our office building.



# mediven<sup>®</sup> cotton – Specifications

## Material

Medium

## Compression class

CCL 1, 2

## Colours

Black  
s













Caramel  
s

Bronze  
s

Details	
<b>Sizes</b>	I – VII
<b>Made-to-measure</b>	Not available
<b>Variants</b>	AD, AG, AT
<b>Product lengths</b>	Regular and petite
<b>Foot part</b>	Open and closed toe
<b>Border</b>	AD: tricot border AG: Silicone dot topband, Silicone micro dot topband

Material composition			
	Polyamide (PA)*	Elastane (EL)	Organic Cotton
<b>CCL 1</b>	51 %	22 %	27 %
<b>CCL 2</b>	46 %	27 %	27 %

\* With a recycled content of 60 percent

mediven cotton						
open toe						
Styles	AD	AD pte.	AG / NoB	AG pte. / NoB	AT	AT pte.
						
	calf	calf petite	thigh with topband	thigh petite with topband	panty	panty petite
<b>Class 1</b>	Y540x01-7	Y547x01-7	Y569x01-7	Y559x01-7	Y510x01-7	Y517x01-7
<b>Class 2</b>	Y640x01-7	Y647x01-7	Y669x01-7	Y659x01-7	Y610x01-7	Y617x01-7
closed toe						
Styles	AD	AD pte.	AG / NoB	AG pte. / NoB	AT	AT pte.
						
	calf	calf petite	thigh with topband	thigh petite with topband	panty	panty petite
<b>Class 1</b>	Y540x11-7	Y547x11-7	Y569x11-7	Y559x11-7	Y510x11-7	Y517x11-7
<b>Class 2</b>	Y640x11-7	Y647x11-7	Y669x11-7	Y659x11-7	Y610x11-7	Y617x11-7

x = Please add 1 for colour caramel, 5 for colour black and 6 for colour bronze.





Standard fit without seam		I	II	III	IV	V	VI	VII
AG with topband, normal	cG	43-48	45-52	49-56	53-60	56-64	60-68	64-72
AG with topband, wide	cG	49-57	53-62	57-67	61-72	65-77	69-81	73-85
ℓ=Length c=Circumference 	cG	43-57	45-62	49-67	53-72	56-77	60-81	64-85
	cF	39-52	41-56	44-60	47-65	50-69	53-73	57-78
	cE	30-37	33-40	35-43	37-45	39-48	41-51	42-53
	cD	27-33	29-36	32-39	34-42	36-45	38-48	40-50
	cC	28-34	30-37	33-40	35-43	37-46	39-49	41-51
	cB1	23-27	24-29	26-32	29-35	31-37	33-39	35-41
	cB	18-20	20-22	22-24	24-26	26-28	28-30	30-32
	cY	26-31	28-33	29-35	31-37	32-38	33-40	34-42
	cA	17-22	19-24	21-26	23-29	25-32	27-34	28-35
	Length measurements	ℓG regular	72-83 cm					
ℓG petite		62-71 cm						
ℓD regular		39-44 cm						
ℓD petite		34-38 cm						
Foot	Highly elastic universal foot size, shoe size 36-43							

Intended purpose: Round-knitted medical compression stocking used for compression of the lower extremities, mainly for the treatment of disorders of the venous system.





mediven<sup>®</sup> cotton



*Feel the difference.  
Make a difference.*





This brochure is made of 100% recycled paper.

Headquarters  
medi GmbH & Co. KG  
Medicusstraße 1  
95448 Bayreuth  
Germany  
T +49 921 912-0  
F +49 921 912-781  
export@medi.de  
www.medi.de/en



098311/09.2022

